

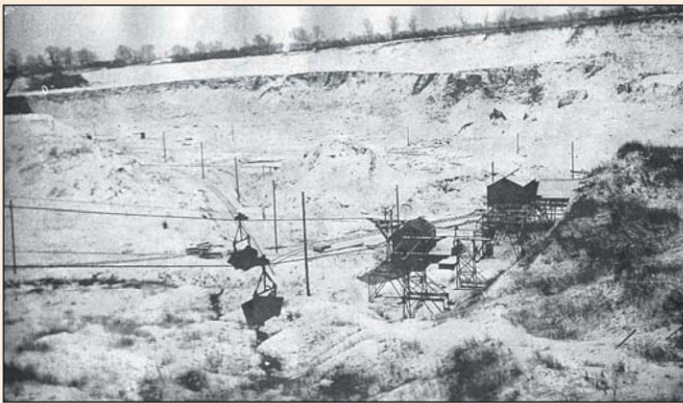
Heritage Hunters



These display panels were researched and compiled by pupils from Milton Keynes Academy

The Blue Lagoon, Bletchley

Written by Cameron Wilson, Year 7



Ropeways carrying the clay c.1930s

Like a lot of Milton Keynes, the Blue Lagoon's present is firmly set in the past. The site was originally used for brick works and was opened in the 1840s.

The lake was created in the 1940s when the Water Eaton brook burst its banks during a harsh winter followed by a rapid thaw.

In the early 1990s it was turned into a nature reserve with the only drawback being the southern pit which is now being used as a landfill site, showing Milton Keynes is a place of contradiction.



Chimney and furnace c.1964



Blue Lagoon today